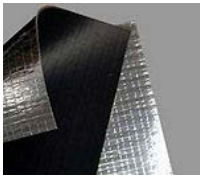


Duct Lagging

From air flow to liquid content, duct lagging helps to increase sound absorption in the cavity and provides thermal insulation as well.

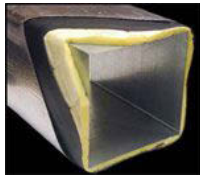
Duct Lagging is typically used to wrap noisy pipes and ducts, and thus help to block the noise contents moving through the pipes. From air flow to liquid content, duct lagging helps to increase sound absorption in the cavity and provides thermal insulation as well.

Types of duct lagging that include a foil-faced reinforced exterior will readily accept a matching lag tape for easy installation. The foil-face also serves as a protective jacket for indoor or outdoor applications. The 2# per sq. foot barrier and the 2" thick quilted fiberglass absorber improves overall acoustical performance, especially at low frequencies.



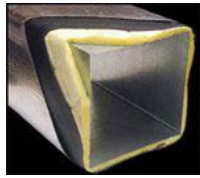
1B Lag

1 Pound per Square Foot Reinforced Foil-Faced Vinyl Barrier



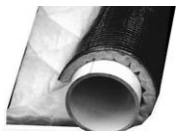
1B QA-3

1 Pound per Square Foot Reinforced Foil-Faced Vinyl Barrier Bonded to 1" Scrim Faced Quilted Fiberglass.



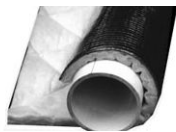
1B QA-9

1 Pound per Square Foot Reinforced Foil-Faced Vinyl Barrier Bonded to 2" Scrim Faced Quilted Fiberglass.



2B QA-3

2 Pound per Square Foot Reinforced Foil-Faced Vinyl Barrier Bonded to 1" Thick Quilted Fiberglass Absorber



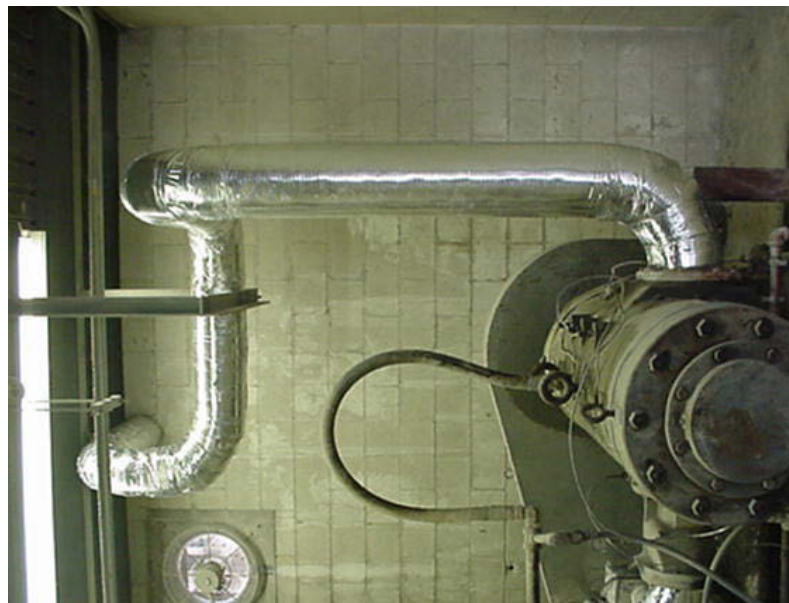
2B QA-9

2 Pound per Square Foot Reinforced Foil-Faced Vinyl Barrier Bonded to 2" Scrim Faced Quilted Fiberglass.



2B Lag

2 Pound per Square Foot Reinforced Mylar-Faced Vinyl Barrier





Duct Lagging

duct lagging helps to increase sound absorption in the cavity and provides thermal insulation as well

Duct Lagging Product Data

1B Lag

- Nominal Thickness: .090"
- Standard Roll: 48"W x 30'L
- Weight: 1.0 lb. psf
- Temperature Range: -10° to +180° F
- Flammability: UL 94 meets VO FMVSS 302: Pass
- Easy to cut, wrap and install with matching lag tape

Product	Octave Band Center Frequencies (Hz) ASTM E-90 & E 413						
	125	250	500	1K	2K	4K	STC
1B Lag	15	16	21	26	33	38	26

1B QA-9

- Nominal Thickness: 2.0"
- Standard Roll: 48"W x 30'L
- Weight: 1.4 lb. psf
- Temperature Range: -20° to +200° F
- "R" Factor: 8.0
- Flammability - Class A (or 1) Per ASTM E84
- Flammability / Smoke Density: 19.5
- Flammability / Flame Spread: 12.5
- Easy to cut, wrap and install with matching lag tape

Product	Octave Band Center Frequencies (Hz) ASTM E-90 & E 413						
	125	250	500	1K	2K	4K	STC
1B QA-9	19	20	23	33	44	53	30

2B QA-3

- Nominal Thickness: 1.0"
- Standard Roll: 48"W x 30'L
- Weight: 2.2 lb. psf
- Temperature Range: -20° to +350° F
- "R" Factor: 4.0
- Flammability - Class A (or 1) Per ASTM E84
- Flammability / Smoke Density: 19.5
- Flammability / Flame Spread: 12.5
- Easy to cut, wrap and install with matching lag tape

Product	Octave Band Center Frequencies (Hz) ASTM E-90 & E 413						
	125	250	500	1K	2K	4K	STC
2B QA-3	20	23	28	37	48	56	32

1B QA-3

- Nominal Thickness: 1.0"
- Standard Roll: 48"W x 30'L
- Weight: 1.2 lb. psf
- Temperature Range: -20° to +350° F
- "R" Factor: 4.0
- Flammability - Class A (or 1) Per ASTM E84
- Flammability / Smoke Density: 19.5
- Flammability / Flame Spread: 12.5
- Easy to cut, wrap and install with matching lag tape

Product	Octave Band Center Frequencies (Hz) ASTM E-90 & E 413						
	125	250	500	1K	2K	4K	STC
1B QA-3	18	18	23	30	39	46	29

2B Lag

- Nominal Thickness: 0.23 inch"
- Standard Roll: 48"W x 30'L
- Weight: 2.0 lb. psf
- Temperature Range: -10° to +180°
- Flammability: Class: UL 94
- Flammability: Meets VO FMVSS 302: Pass
- Easy to cut, wrap and install with matching lag tape

Product	Octave Band Center Frequencies (Hz) ASTM E-90 & E 413						
	125	250	500	1K	2K	4K	STC
2B QA-3	20	23	28	37	48	56	32

2B QA-9

- Nominal Thickness: 2.0"
- Standard Roll: 48"W x 30'L
- Weight: 2.4 lb. psf
- Temperature Range: -20° to +200° F
- "R" Factor: 9.0
- Flammability - Class A (or 1) Per ASTM E84
- Flammability / Smoke Density: 19.5
- Flammability / Flame Spread: 12.5
- Easy to cut, wrap and install with matching lag tape
- 100% adhesion between barrier and quilt

Product	Octave Band Center Frequencies (Hz) ASTM E-90 & E 413						
	125	250	500	1K	2K	4K	STC
2B QA-9	21	24	30	41	54	58	34

